

Kang Minje

강민제

Kang Minje was born and raised in Korea.

Rejecting the sleekness of the digital, he frequently incorporates organic elements into his work.

At the core of his work is an *inner blue*.

Rooted in youth, it is a subtle, melancholic feeling that he sees as a new way of understanding the generation.

Work is  
function to dissolve the world into my own.  
It's based on various senses, and mine gathers and overlaps  
within a fine equation, then rebuilds itself.

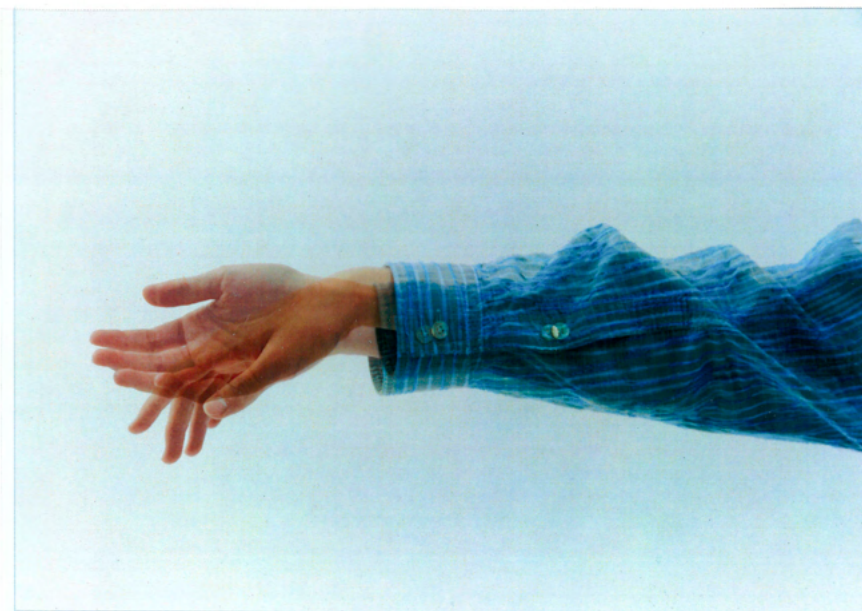
The flaw in perfect process,  
that is the highest thing I chase.  
Humanity.  
Rather than the sleek and warm screenlight,  
I am trying to set my eyes beyond it.

작업은  
보통의 세계를 나의 세계로 녹여내기 위한 함수다.  
그 것은 여러 감각에 기반하며 나의 것은 매끈한 함수  
속에서 뭉치고 포개져 재건된다.

완벽한 공정 속 결함은 내가 좇는 가장 높은 것이다.  
인간다움.  
매끈하고 뜨거운 스크린의 빛보다 그 너머의 것에  
눈길을 두려고 하고 있다.

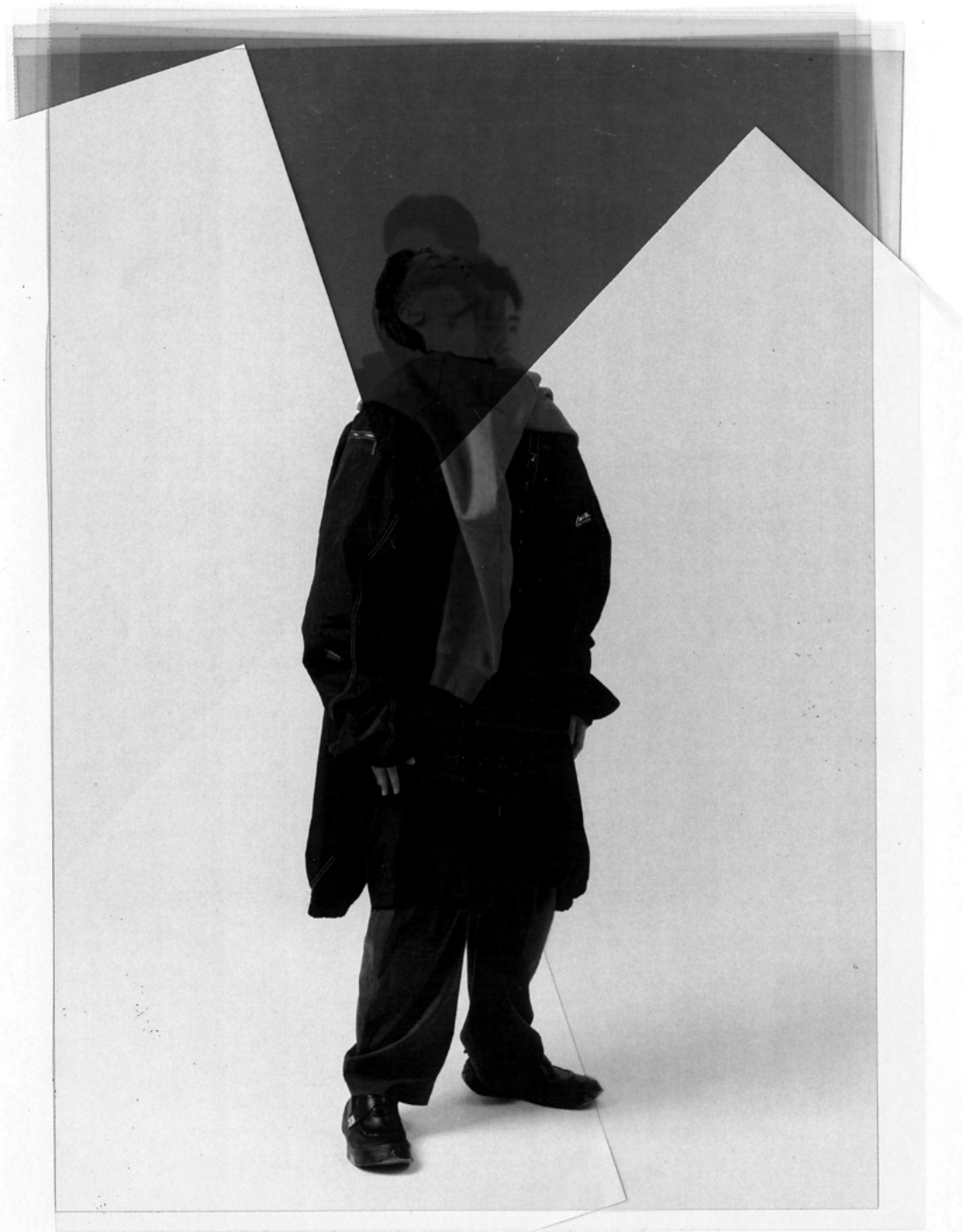
**Superposition**  
2023

Inkjet print on transparent film



**Superposition**  
2023

Inkjet print on transparent film



Portraits  
2021~

Gelatin silver print





Portraits  
2021~

Inkjet print



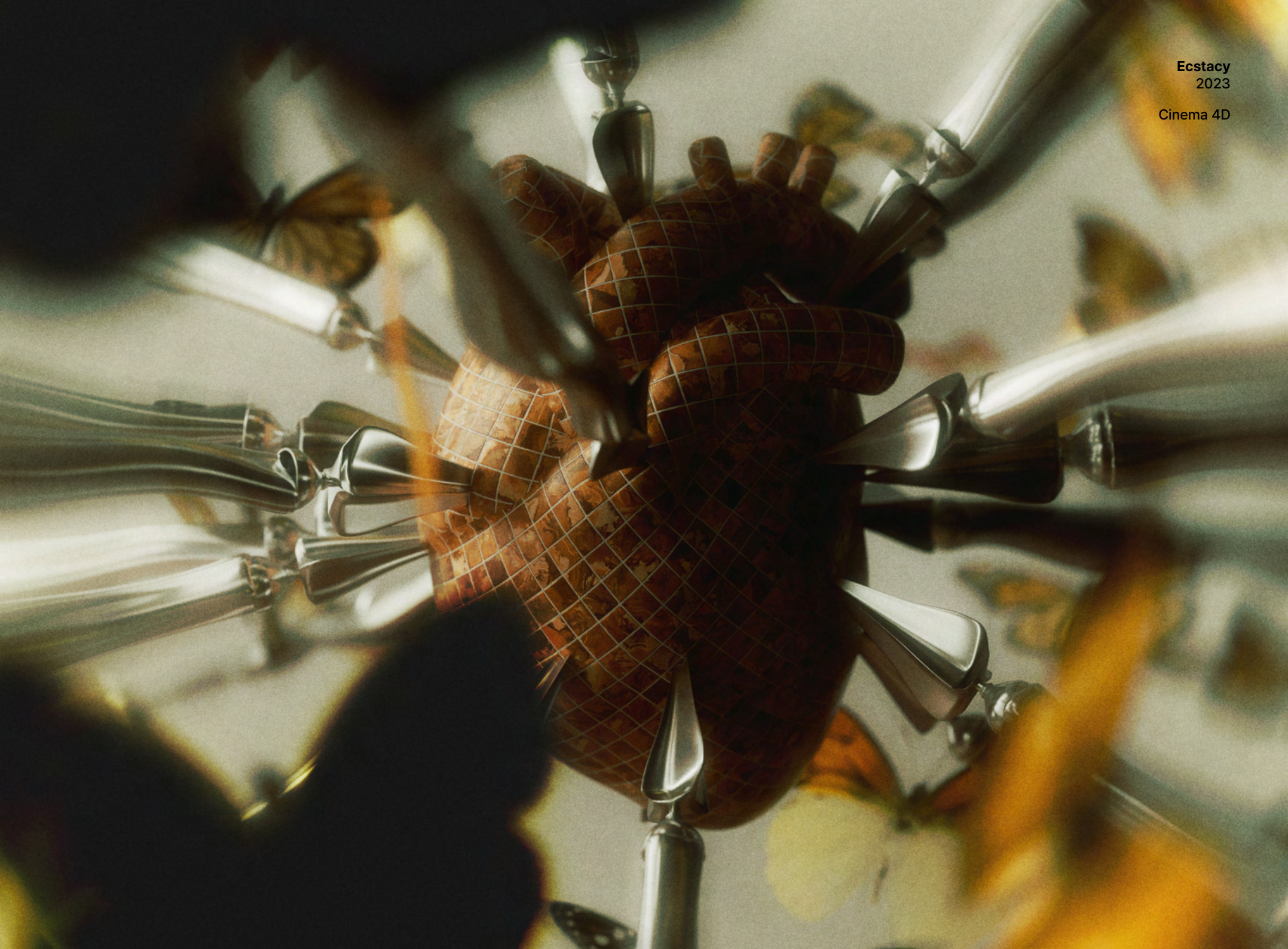
Portraits  
2021~  
Inkjet print





Ecstasy  
2023

Cinema 4D



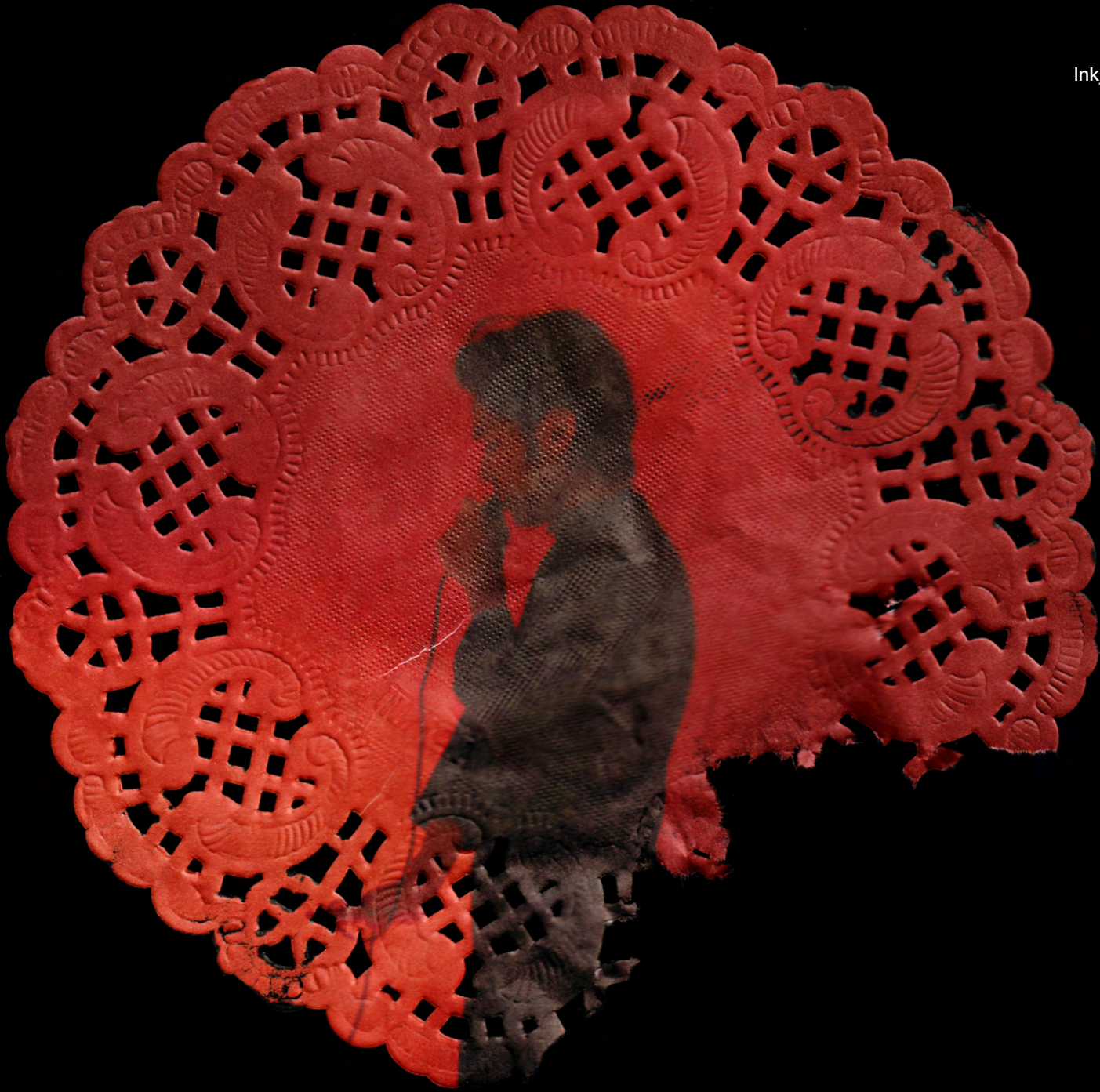
Portraits  
2021~

Inkjet print on transparent paper



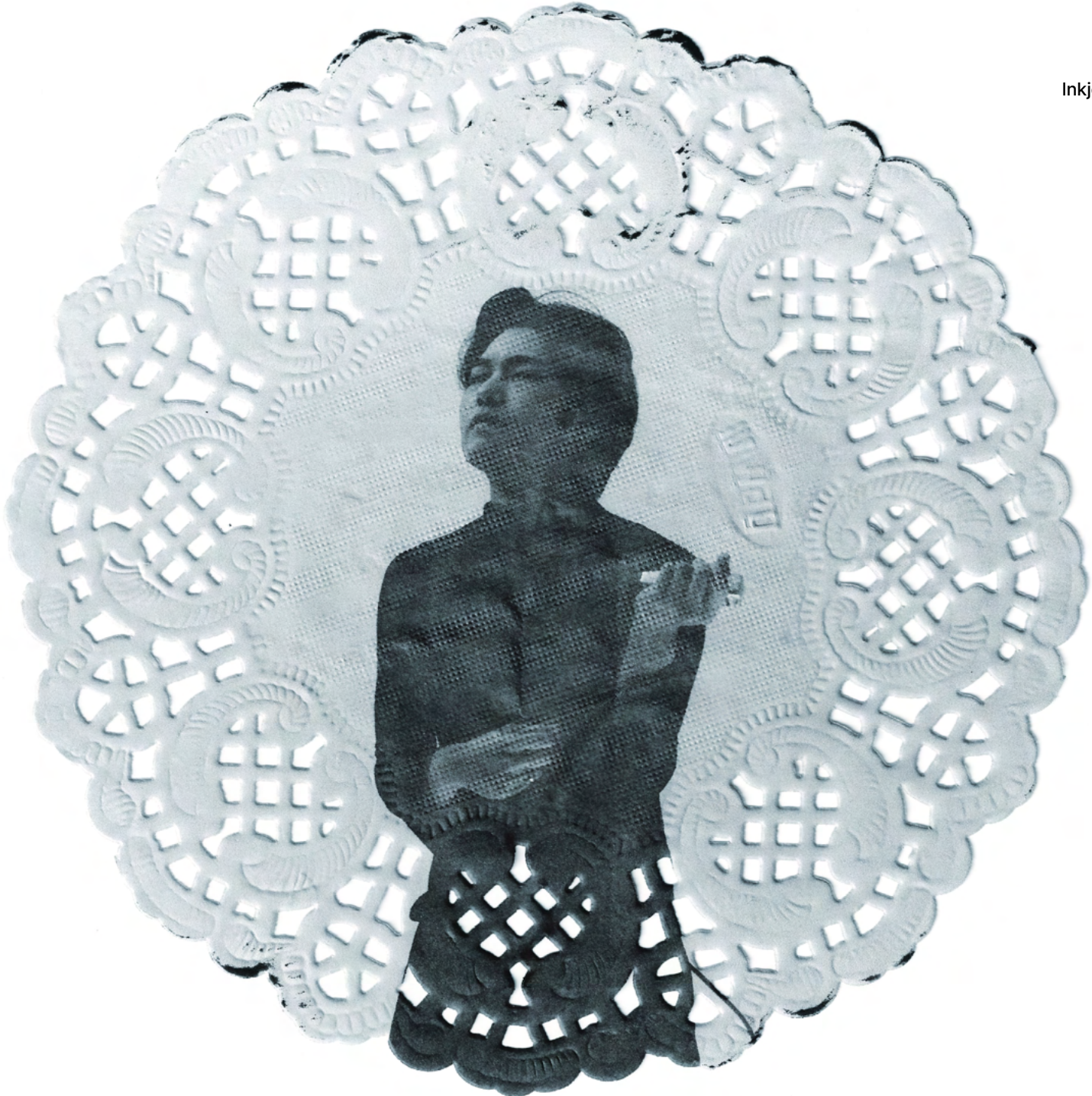
Portraits  
2021~

Inkjet print on paper coaster



Portraits  
2021~

Inkjet print on paper coaster





Portraits  
2021~

Inkjet print on wet paper









Portraits  
2021~

Inkjet print on photo paper



Portraits  
2021~

Polaroid film





Portraits  
2021~

Polaroid film





Love, Idea, Party  
2023

Cinema 4D



March  
2023

Single channel video, 88"







**end of document**